



Eotaxin Polyclonal Antibody

Catalog No	YP-Ab-16039
Isotype	IgG
Reactivity	Human;Mouse;Rat
Applications	WB;ELISA
Gene Name	CCL11
Protein Name	Eotaxin
Immunogen	The antiserum was produced against synthesized peptide derived from the Internal region of human CCL11. AA range:41-90
Specificity	Eotaxin Polyclonal Antibody detects endogenous levels of Eotaxin protein.
Formulation	Liquid in PBS containing 50% glycerol, 0.5% BSA and 0.02% sodium azide.
Source	Polyclonal, Rabbit,IgG
Purification	The antibody was affinity-purified from rabbit antiserum by affinity-chromatography using epitope-specific immunogen.
Dilution	Western Blot: 1/500 - 1/2000. ELISA: 1/20000. Not yet tested in other applications.
Concentration	1 mg/ml
Purity	≥90%
Storage Stability	-20°C/1 year
Synonyms	CCL11; SCYA11; Eotaxin; C-C motif chemokine 11; Eosinophil chemotactic protein; Small-inducible cytokine A11
Observed Band	11kD
Cell Pathway	Secreted .
Tissue Specificity	Blood,Foreskin,Lung,Placenta,Small intestine,
Function	function:In response to the presence of allergens, this protein directly promotes the accumulation of eosinophils, a prominent feature of allergic inflammatory reactions. Binds to CCR3.,induction:By TNF-alpha, interleukin-1 alpha and interferon gamma.,online information:CCL11 entry,PTM:O-linked glycan consists of a Gal-GalNAc disaccharide which is modified with up to 2 sialic acid residues.,similarity:Belongs to the intercrine beta (chemokine CC) family.,
Background	This antimicrobial gene is one of several chemokine genes clustered on the q-arm of chromosome 17. Chemokines form a superfamily of secreted proteins involved in immunoregulatory and inflammatory processes. The superfamily is divided into four subfamilies based on the arrangement of the N-terminal cysteine residues of the mature peptide. This chemokine, a member of the CC subfamily, displays chemotactic activity for eosinophils, but not mononuclear cells or neutrophils. This eosinophil-specific chemokine is thought to be involved in



eosinophilic inflammatory diseases such as atopic dermatitis, allergic rhinitis, asthma and parasitic infections. [provided by RefSeq, Sep 2014],

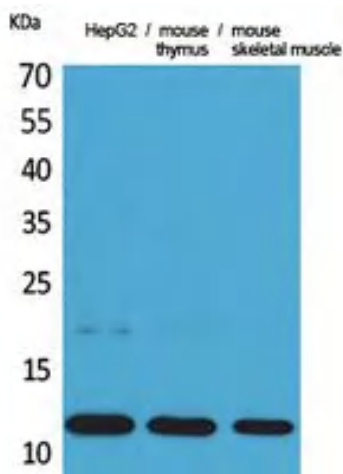
matters needing attention

Avoid repeated freezing and thawing!

Usage suggestions

This product can be used in immunological reaction related experiments. For more information, please consult technical personnel.

Products Images



Western Blot analysis of HepG2, mouse thymus, mouse skeletal muscle cells using Eotaxin Polyclonal Antibody. Secondary antibody(catalog#:RS0002) was diluted at 1:20000